

**Lebanon County Residents
Schedule an At Home Collection
of Household Hazardous Waste**



go to www.mxiinc.com/lebanon
or call 1-800-742-5542 Ext 123

**\$15 Co-Payment is Required to Schedule
Limit of one pick-up per household per year**

Sponsored by Greater Lebanon Refuse Authority

Household Hazardous Waste (HHW):

Dangerous or harmful items that cannot be placed with the regular trash, poured down a drain, or dumped into the ground.

Examples: Adhesives, Aerosols, Automotive Liquids, Flammables, Lawn & Garden Chemicals, Paint, Thinners, Stains, Varnishes, Gasoline, Mercury Thermometers, Fluorescent Tubes, Degreaser, etc.

Electronics Recycling (E-Waste):

Greater Lebanon Refuse Authority (GLRA) accepts various electronics for FREE at it's Electronics Recycling Facility.

The hours are Monday—Friday 8:00 a.m. to 3:30 p.m. and Saturdays from 8:30 a.m. to 11:30 a.m.

"No assistance will be given to unload. You must be able to unload materials safely and properly. If that requires bringing 2 or 3 individuals along to unload an oversized item, then you must do so." - GLRA

You can recycle up to 5 electronic items per day! This rule applies to everyone: residents, businesses, manufacturers and institutions.

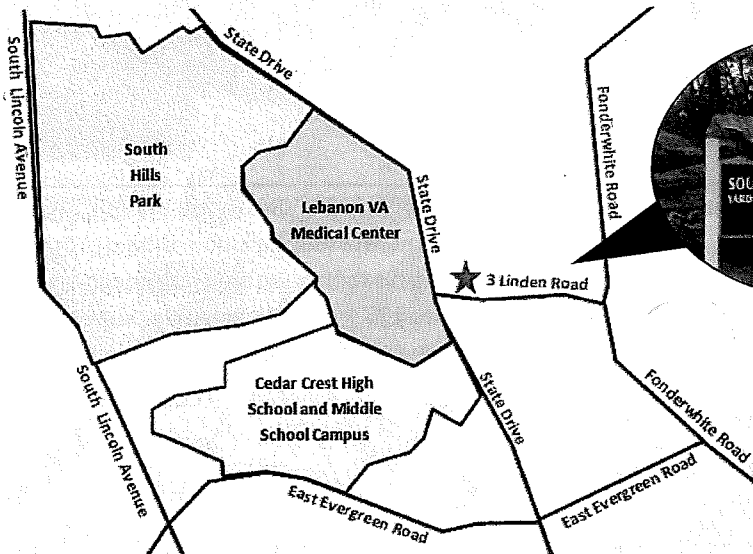
Check www.goglra.org for up-to-date acceptable items.



Examples: Cell phones; controllers; video game consoles; TVs (CRT, LCD, LED, plasma, console); computer monitors; keyboards; modems; computer speakers; computers (desktops, laptops, notebooks, tablets, etc.); and desktop printers.

**South Lebanon Township
Yard Waste and Recycling Center**

3 Linden Road ▪ Lebanon, PA 17042



Yard Waste Center
Permits available at
Township Building
1800 S. 5th Ave
Lebanon, PA 17042

Grand Opening — October 23, 2020



Hours of Operation:

April — September: Daily from 7:00 a.m. - 7:00 p.m.

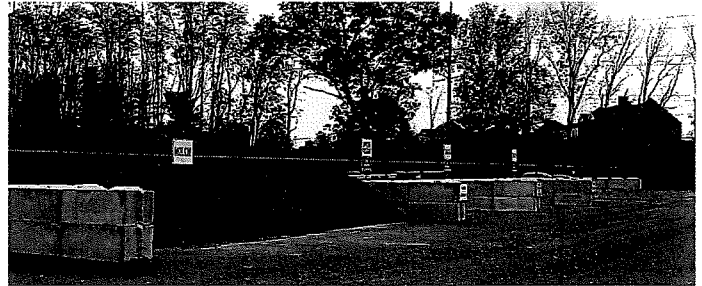
October — March: Daily from 7:00 a.m. - 5:00 p.m.

Visit the Township website at:
www.twp.south-lebanon.pa.us

Yard Waste and Recycling Center



Drop-Off Yard Waste Center inside the fence.



Inside the gated area (Access Card required)

- ⇒ **MULCH:** When available, mulch is **FREE** for all permit holders to take and will be placed in this bin.
- ⇒ **GARDEN RESIDUE:** This bin includes plant material, flowers, ornamental grass, etc. **NO GRASS CLIPPINGS!**
- ⇒ **LEAVES:** This bin is only for loose leaves. **NO BAGS of any kind!**
- ⇒ **BRUSH:** This bin is for twigs, branches less than 15 inches in diameter, hedge trimmings, shrubs, Christmas trees, etc.

(from LEFT to RIGHT) 1) Mulch 2) Garden Residue 3) Leaves 4) Brush



Drop-Off Recycling Center outside the fence.

Outside the gated area (FREE to all residents)

- ⇒ There are 4 blue recycling bins outside the fence (corrugated cardboard, mixed paper, aluminum cans and tin / steel cans) that are **FREE** for all residents to use.
- ⇒ After depositing your mixed paper or cans into the bins, be sure to **close the doors** to keep water out!
- ⇒ **Flatten all cardboard** before placing in the corrugated cardboard bin.



ONLY CORRUGATED CARDBOARD	ONLY MIXED PAPER	ONLY TIN/STEEL CANS	ONLY ALUMINUM CANS
 <ul style="list-style-type: none"> • MUST BE FLATTENED • NO CONTAMINATION • No Paperboard 	 <ul style="list-style-type: none"> YES • Newspapers • Magazines • Old • Office/Shipping paper • Soft back books • Paperboard boxes 	 <ul style="list-style-type: none"> NO • Aluminum • Scrap Metal 	 <ul style="list-style-type: none"> NO • Tin or Steel • Scrap Metal • Aluminum Foil
			

Outside the gated area (FREE to all residents)

- ⇒ **CORRUGATED CARDBOARD:** Only cardboard with ridges inside (i.e. shipping boxes). **NO PAPERBOARD!**
- ⇒ **MIXED PAPER:** This includes shredded paper (**NO BAGS!**), office and copy paper, manilla folders (no binders), junk mail, magazines, newspapers and the inserts, phone books and paperback books (**NO HARDCOVERS!**), cereal boxes and other similar boxes (i.e. paperboard), etc.
- ⇒ **TIN / STEEL CANS:** Only tin or steel cans (i.e. food cans). **NO SCRAP METAL!**
- ⇒ **ALUMINUM CANS:** Only aluminum cans (i.e. soda, beer, energy drinks, etc.). **NO ALUMINUM FOIL or SCRAP!**

RECYCLE THESE ITEMS CURBSIDE



CANS
Aluminum & Steel



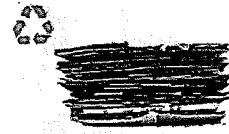
PLASTIC
Bottles & Jugs



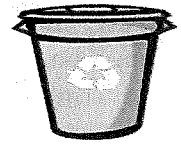
NEWSPAPER
Clean & Dry
No Food Contact



GLASS
Bottles & Jars



CARDBOARD
Dry & Flattened
No Food Contact



Recycling containers
are available at the
Township building



For additional recycling, the Township provides collection containers, available to all residents, for: **CARDBOARD, CANS (Aluminum & Steel / Tin) and MIXED PAPER!**

Residential and Commercial Recycling

Trash and Recycling collection is not provided by the township. It is up to each residential unit to contract with a local hauler for these services.

Some haulers collect more items than we require in our ordinance, so check with your hauler to be sure you are making the most of the recycling program.

Commercial, industrial and municipal establishments must recycle office paper and corrugated cardboard as well as the items mandated for residential.



This is a split bin. Only recycle aluminum cans on the left side and steel / tin cans on the right side. **NO BAGS!**

Lebanon County Recycling



The Greater Lebanon Refuse Authority (GLRA) hosts a **recycling drop-off center** located at **1610 Russell Road Lebanon, PA 17046**. It is open to all Lebanon County Residents, for **FREE!** Some of the items you can recycle there are **glass** (clear, brown and green), **plastics**, **paper**, **cans**, and more. For more information about recycling with GLRA, please go to their website at www.goglra.org.

FREE Christmas Tree Recycling:

REMOVE ALL DECORATIONS FROM THE TREE!
DO NOT PLACE TREE IN A BAG!

WHEN: Starts **DECEMBER 26** and ends three (3) weeks later.

 **DROP-OFF LOCATIONS (ALL FREE):**

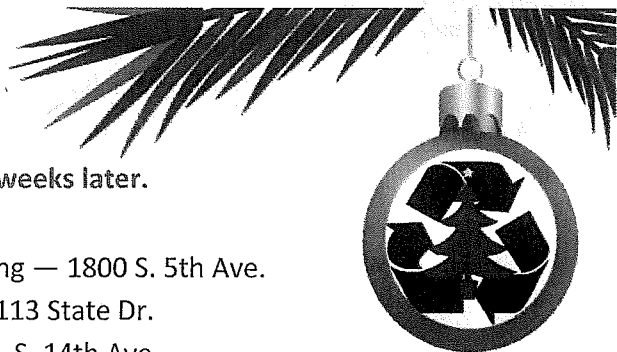
*Behind Township Building — 1800 S. 5th Ave.

*Maintenance Shed — 1113 State Dr.

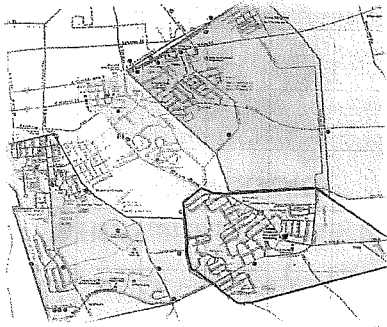
*Ironwood Playground — S. 14th Ave.

*Yard Waste Center (permit holders only) — 3 Linden Rd.

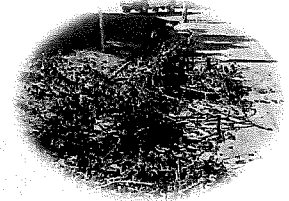
*GLRA — 1610 RUSSELL RD UNTIL THE 3RD SATURDAY IN FEBRUARY FOR FREE.



SPRING & FALL YARD WASTE CURBSIDE COLLECTION

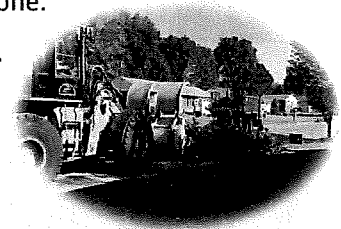


WHAT: Garden plants, hedge trimmings, tree branches 5" in diameter or less —**NO GRASS CLIPPINGS** or any objects that would damage the equipment!! **ABSOLUTELY NO BAGS!!**



WHEN: Spring Collection is in early April and Fall Collection is in late September. **Follow the website for specific dates each year.** Pick up starts in the red zone, then green, then yellow and finishes in the blue zone. Check the website to determine your pick up zone.

Put yard waste at the curb BY 6 a.m. the first day of collection. When possible, combine small piles with neighbors to make it easier for pick up.



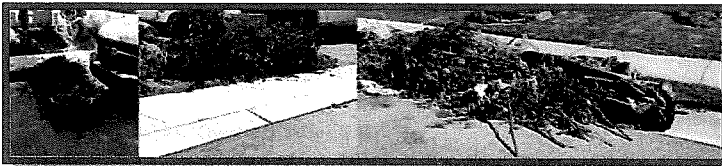
PICK UP OCCURS ONLY ONCE PER NEIGHBORHOOD!!

The first crew will come around to pick up the large pieces, while the second crew will sweep up small debris left behind. **Crews will not return after the second crew has already been through your neighborhood.**



It is the responsibility of the owner to dispose of any remaining unacceptable items left behind.

Curbside Yard Waste Collection Guidance

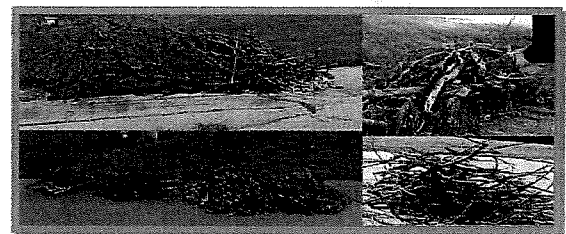


WHAT NOT TO DO (photo to left):

- × Place piles close to vehicles or large obstructions!
- × Leave piles on yard or sidewalk!
- × Include trash or other items in pile!

DO THIS INSTEAD (photo to right):

- ✓ Move vehicle or place pile away from large obstructions!
- ✓ Place pile at curb or on street a week before pick up!
- ✓ Remove all trash, tarps, bags, decorations, etc. from pile!
- ✓ Keep yard waste and leaves separate!
- ✓ Combine piles with neighbors when possible!



LEAF COLLECTION:

WHEN: Starts the first Monday in October and ends the last day of November, weather permitting. Pile leaves at the curb. **NO BAGS!!** The leaf vacuum will be around to pick up the piles several times throughout the leaf collection period.

South Lebanon Township residents can purchase a Yard Waste and Recycling Center permit for \$40/year. To obtain a permit, bring a photo ID and payment (cash, check or money order) to the Township Building.