

South Lebanon Township Police Department has joined the **CRIMEWATCH** network! Please sign up at [SOUTHLEBANONPD.ORG](http://SOUTHLEBANONPD.ORG) to stay informed on the happenings in South Lebanon.

Check out the "Forms" tab to: [register your alarms or cameras](#), [submit a tip](#) or [traffic complaint](#), [request a home check while you're on vacation](#), or [compliment an officer](#).

Working in partnership with the community, we can proactively prevent crime, support victim recovery and hold offenders accountable. **Together with your help and cooperation we can continue to keep South Lebanon Township the premium area to live and work!**

### ***Emergency? Call 9-1-1***

If you need any kind of emergency services to be dispatched (Police, Fire, EMT), or to report an accident or incident, **CALL 9-1-1**.



SIGN UP FOR CRIMEWATCH NOTIFICATIONS

# SOUTHLEBANONPD.ORG

DOWNLOAD THE FREE APP TODAY



## **South Lebanon Township**

1800 S. 5th Avenue

Lebanon, Pa 17042-7999

Phone: 717-274-0481

Fax: 717-274-1272

Email: [sltownship@comcast.net](mailto:sltownship@comcast.net)

[www.twp.south-lebanon.pa.us](http://www.twp.south-lebanon.pa.us)

**A Community of Service.**



**Fall 2023**



## [South Lebanon Fire Department Merger](#)

Representatives from the three volunteer fire-rescue companies serving South Lebanon Township in Lebanon County jointly announced they are starting a new chapter in their combined 375-year history. The new South Lebanon Fire Department is a cooperative effort by South Lebanon Fire Company No. 1, Friendship Fire Company of South Lebanon Township, and Prescott Community Fire Company. The new department is being formed to improve public safety services and create a stronger volunteer fire-rescue system to serve the municipality and surrounding communities. **"For the past two years, our members took the initiative to develop a single organization that will coordinate emergency response for the residents and businesses of South Lebanon Township and our neighboring communities," William Weikel, the Merger Committee Chairman said.** "Over the past 5 years, there has been a decline in volunteer firefighters, not just locally, but statewide. "The new association is the first step in our plan to address those and many other challenges facing today's fire and emergency services," Weikel said. "The new level of cooperation which led to the formation of the new association is the mechanism that will move the township fire-rescue system forward to meet current standards and create a more cost-effective and efficient organization. To continue to be successful, we need the communities' support even more now as we implement our plans for the future. **[If you are interested in serving as a volunteer in our community, please contact us at FightSouthLebanonFires.org,](#)**" Weikel said. The new department will have over 40 active volunteer members and will respond to over 500 calls for service a year and will protect the same coverage areas focusing on providing service to South Lebanon Township and mutual aid to surrounding communities in Lebanon County, Pennsylvania.

For more information about getting involved: [www.FightSouthLebanonFires.org](http://www.FightSouthLebanonFires.org)

## [Burning Rules — Ordinance 324](#)

- Prohibits burning except for Agriculturally Zoned properties.
- **[Allows for the use of recreational burn pits that are 15 feet from any building, property line and road line. Contact the Township for regulations regarding fires in Agricultural districts.](#)**



Do Not Burn Trash

- Prohibits burning of any leaves, paper, refuse or other material or substance of any kind, including, without limitation, any recyclable materials, as defined by the Pennsylvania Department of Environmental Protection and South Lebanon Township.
- **[Burning of construction debris, aerosol cans, by-products of manufacturing and processing operations and wastes from commercial operations is strictly prohibited.](#)**
- No rubbish or trash including rubber, synthetic products, paint products, plastic and synthetic fabrics, pre-treated scrap lumber, or any other matter or material, which may produce an offensive smoke and/or odor, shall be burned.
- **[The burning of tires, tubes, tar, waste oil and motor vehicles or parts of motor vehicles is prohibited.](#)**

*Leaves and branches can be recycled at the Yard Waste and Recycling Center on 3 Linden Road.  
Permits can be obtained at the Township Building for \$40/year for residents.*

## Preventing Stormwater Runoff Pollution

- ◆ Only allow rain water to enter storm drains and inlets.
- ◆ **No leaves, no grass, no trash.**
- ◆ **Never dump anything into storm drains or streams.**
- ◆ **It is illegal to allow grass clippings in the street.**
- ◆ Pick up after your pet.
- ◆ Use least-toxic fertilizers and pesticides.
- ◆ Check your car for leaks and recycle your oil.
- ◆ **Wash your vehicles at a local car wash instead of in your driveway.** This will help keep harmful detergents and soaps out of the streams.



**Report any spills or suspicious dumping to County Dispatch at (717) 272-2054.**

## Grass Clippings

- ◆ It is illegal to allow grass clippings to remain on the street. Gather clippings and make mulch or put them in the trash.
- ◆ Obtain **permission from the owner** before piling grass clippings or yard waste in a field or wooded area.
- ◆ Best practice: Mulch clippings as you mow!



## Prevent Mosquito-borne Disease!

**Eliminate sources of standing water on your property!**

- ◆ **Birdbaths** — Change water frequently.
- ◆ **Tires** — Drill holes in tire to allow water to drain.
- ◆ **Pool Covers** — Make sure water isn't gathering on top.
- ◆ **Flower Pots** — Remove stagnant water from pots.

Sunday	Monday	Tuesday	Wednesday	Thursday	Friday	Saturday
● NEW ○ FULL <div style="border: 2px solid blue; padding: 5px; display: inline-block; font-size: 2em;">July 2023</div>	Jun 26	Jun 27	Jun 28	Jun 29	Jun 30	1
2	3 ○	4 CLOSED Independence Day	5	6	7	8
9	10	11 7 pm Supervisors Meeting	12	13	14	15
16	17 ●	18	19	20	21	22
23 / 30	24 / 31 7 pm (24) Planning Commission	25 7 pm Supervisors Meeting	26	27	28	29

Dates in blue indicate the Township building is closed.

## Fire Police Help Wanted

The South Lebanon Township **Fire Police** are actively recruiting new members. This is a good opportunity for persons looking to stay active and anyone interested in volunteering to serve the community. **No experience necessary** – all training and equipment is provided and no huge time commitment required, on average our Fire Police serve about one (1) hour per day.



**For more information contact: [Captain Mike Hartman at 717-507-3332](tel:717-507-3332)**

### PA SCHOOL BUS STOPPING LAW



- When you meet or overtake a stopped school bus with red signal lights flashing and stop arm extended, you **MUST STOP**.
- When you approach an intersection where a school bus is stopped with red signal lights flashing and stop arm extended, you **MUST STOP**.
- You **MUST STOP** at least 10 feet from the bus
- You **MUST WAIT** until the red lights have stopped flashing and the stop arm has been withdrawn before moving.
- **DO NOT MOVE** until all children have reached a place of safety.

**PENALTIES:** 60 day license suspension, 5 points on record, AND \$250 fine. ***WHEN IN DOUBT, STOP!!!***

Sunday	Monday	Tuesday	Wednesday	Thursday	Friday	Saturday
Jul 30	Jul 31	1 <input type="radio"/>	2	3	4	5
<b>August 2023</b>						
6	7	8 7 pm Supervisors Meeting	9	10	11	12
13	14	15	16 <input checked="" type="radio"/>	17	18	19
20	21 7 pm Planning Commission	22 7 pm Supervisors Meeting	23	24	25	26
27	28 	29	30 <input type="radio"/>	31	Sep 1	<input checked="" type="radio"/> NEW <input type="radio"/> FULL
Get ready for Fall Yard Waste Collection in September!!						

# South Lebanon Township

## Curbside Yard Waste Collection Map

### Days 2 & 3: GREEN ZONE

Anne Avenue, Aspen Avenue, Broad Street, Cambridge Drive, Daniel Avenue, Daniel Street, East Evergreen Road, East Poplar Street, Edris Lane, Edward Avenue, Elizabeth Avenue, Evergreen Road, Falcon Circle, Falcon Drive, Fonderwhite Road, Foxchase Lane, Franklin Avenue, Herman Avenue, Horst Avenue, Hunter Court, Joseph Avenue, Katherine Avenue, Klein Avenue, Linden Road, Margaret Avenue, Marvin Avenue, Monticello Drive, Noble Street, Oxford Drive, Park Avenue, Parkside Drive, Pine Avenue, Plum Street, Princeton Avenue, Princeton Place, Renova Avenue, Richard Avenue, Ridge Avenue, Rocherty Road, Rutherford Circle, Smith Avenue, South 2nd Street, South 3rd Street, South 4th Street, South 5th Street, South Lincoln Avenue, Southfield Road, State Drive, Strathford Drive, Sue Circle, Timothy Avenue, Vine Street, Weiss Avenue, Wilhelm Ave, Worth Street

### Days 3 & 4: YELLOW ZONE

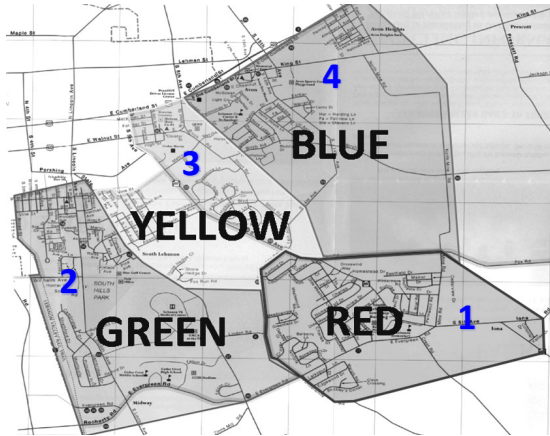
Acorn Circle, Adam Drive, Berbec Avenue, Birch Road, Career Drive, Cedar Court, Cloister Street, East High Street, East Walnut Street, Folmer Street, Fox Ridge Lane, Fox Run Road, Herr Street, Hickory Boulevard, Hockley Avenue, Horst Avenue, Kiner Avenue, Klein Avenue, Metro Drive, Moravian Street, Palm Lane, Ridge Avenue, Short Road, South 1st Avenue, South 2nd Avenue, South 3rd Avenue, South 4th Avenue, South 5th Avenue, South 6th Avenue, South 7th Avenue, South 14th Avenue, State Drive, Stonehedge Court, Stonehedge Drive, Timber Boulevard, Vine Street, Wheatstone Lane

### Days 4 & 5: BLUE ZONE

Allegheny Avenue, Birch Road, Career Drive, Challenge Drive, Cross Street, East Chestnut Street, East Old Cumberland Street, East Pennsylvania Avenue, East Street, Elder Street, Esther Drive, Fairview Lane, Fox Road, Harding Lane, Henry Hauck Lane, Horseshoe Circle, Jill Ann Drive, King Street, Leinbaugh Avenue, Lentz Drive, Meadow Drive, Metro Drive, North Mine Road, Poplar Street, Progress Avenue, Railroad Avenue, Richfield Drive, Rockledge Drive, South 12th Avenue, South 13th Avenue, South 14th Avenue, South 15th Avenue, Stager Avenue, Stevens Lane, Warren Drive, West Street

### Days 1 & 2: RED ZONE

Ashford Drive, Barberry Lane, Beckley's Corner, Boxwood Drive, Briar Road, Cedarview Drive, Charles Street, Clays Crossing, Clearview Drive, Clover Drive, Cobblestone Drive, Colonial Drive, Crest Road, Crestview Drive, Crimson Court, Crosswind Way, East Evergreen Road, Eastfield Drive, Edgewood Drive, Endress Road, Fonderwhite Road, Fox Road, Greenfield Drive, Hazel Court, Homestead Drive, Iona Road, Jayanne Drive, Keller Drive, Larkspur Lane, Linda Way, Manor Drive, Maplewood Road, Margin Road, Meadowview Drive, Mine Road, Norfolk Lane, Oakview Court, Olde Meadow Lane, Pennwood Road, School Lane, South Fifth Avenue, Southgate Drive, Sunrise Drive, Valley View Place, Werni Drive, Wintermere Road



## Fall Curbside Yard Waste Collection Guidance

**WHEN:** Begins **Monday September 18** (*weather permitting*) **ONLY ONCE PER NEIGHBORHOOD!!** The



Items at Curb



First Crew



Second Crew

first crew will come around once to pick up the large pieces and then the second crew will come through to sweep up small debris left behind.

**Crews will not return if they've already been through your neighborhood. Don't wait until**

**September 18th to put out your yard waste!!!!** Combine piles with neighbors when possible!

**WHAT:** Garden plants, hedge trimmings, tree branches less than 5" diameter, leaves **NO GRASS CLIPPINGS** nor anything that would damage the equipment!! Limit your pile to about the amount that would fit in a pickup truck bed. **It is the resident's responsibility to dispose of any unacceptable items or piles.**

### WHAT NOT TO DO:

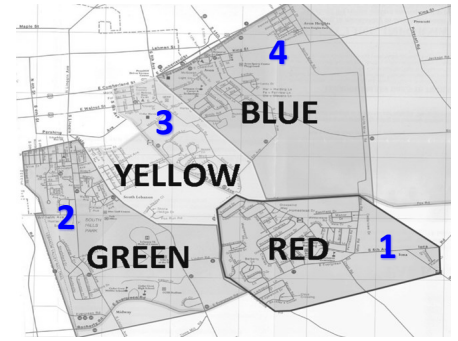
- × Place piles close to vehicles or large obstructions!
- × Leave piles on yard or sidewalk!
- × Include trash or other items in pile!

### DO THIS INSTEAD:

- ✓ Move vehicle or place pile away from large obstructions!
- ✓ Place pile at curb or on street a week before pick up!
- ✓ Remove all trash, tarps, bags, decorations, etc. from pile!

South Lebanon Township residents can purchase a Yard Waste & Recycling Center permit for \$40/year. To obtain a permit, **bring a photo ID and payment (cash, check or money order) to the Township Building.**

# FALL YARD WASTE and LEAF COLLECTION



**WHEN:** Begins at 6 a.m. on **Monday, September 18** (weather permitting)

Put your yard waste at the curb **up to two weeks before** collection.

**PICK UP ONLY ONCE PER NEIGHBORHOOD!!** The 1st crew will pick up the large pieces and the 2nd crew will vacuum up small debris.

**Crews will not return once they have been through with 2nd crew.**

**It is the property owner's responsibility to clean and remove and remaining debris left after 2nd crew.**

**WHAT:** Garden plants, hedge trimmings, tree branches less than 5" diameter. **NO LEAVES** and **NO GRASS** or anything that would damage the equipment!! **NO BAGS!!**

**Combine small piles with neighbors if possible.** Limit your pile to what would fit in a pickup truck bed.

**LEAF COLLECTION:** WHEN: **Oct 2 — Nov 30**, ending earlier if there is snow; **Pile leaves at the curb.**



**Residents can purchase a Yard Waste and Recycling Center permit for \$40 / year.**

Look on the township website [WWW.TWP.SOUTH-LEBANON.PA.US](http://WWW.TWP.SOUTH-LEBANON.PA.US) to find the **most up-to-date information** about: Yard Waste Collection, Recycling, Community Events, Meetings and more.

Sunday	Monday	Tuesday	Wednesday	Thursday	Friday	Saturday
● NEW ○ FULL	Aug 28	Aug 29	Aug 30	Aug 31	1	2
<h1>September 2023</h1>				Dates in blue indicate the Township building is closed.		
3	4 <b>CLOSED</b> Labor Day	5 <span style="border: 1px solid black; padding: 2px;">DUE</span> <b>PINK Sewer Bill DUE</b>	6	7	8	9
10	11	12 7 pm Supervisors Meeting	13	14	15 <span style="border: 1px solid black; padding: 2px;">DUE</span> <b>GREEN Sewer Bill DUE</b>	16
17	18 <b>Yard Waste Collection Starts Today</b>	19	20	21	22 <b>Yard Waste Collection Ends Today</b>	23
24 7 pm (25) —> Planning Commission	25 <span style="border: 1px solid black; padding: 2px;">DUE</span> <b>BLUE Sewer Bill DUE</b>	26 7 pm Supervisors Meeting	27	28	29 ○	30



# RECYCLE THESE ITEMS CURBSIDE



**CANS**  
Aluminum & Steel



**PLASTIC**  
Bottles & Jugs



**NEWSPAPER**  
Clean & Dry  
No Food Contact



**GLASS**  
Bottles & Jars



**CARDBOARD**  
Dry & Flattened  
No Food Contact



*Recycling containers  
are available at the  
Township building*

## **Residential and Commercial Recycling**

**Trash and Recycling collection is not provided by the township.** It is up to each **residential** unit to contract with a local hauler for these services. *Some haulers collect more items than we require in our ordinance, so check with your hauler to be sure you are making the most of the recycling program.*

**Commercial, industrial and municipal establishments must recycle** office paper and corrugated cardboard as well as the items mandated for residential.

**South Lebanon Township's Yard Waste and Recycling Center** located at 3 Linden Road has drop off bins available for residential and commercial establishments to recycle corrugated cardboard, mixed paper, aluminum cans and bi-metal cans. Please do your part to improve recycling in our community, by placing only recyclable materials in the bin. Remember...

**WHEN IN DOUBT, THROW IT OUT!**

### **Lebanon County Residents Schedule an At Home Collection of Household Hazardous Waste**



**go to [www.mxiinc.com/lebanon](http://www.mxiinc.com/lebanon)  
or call 1-800-742-5542 Ext 123**

**\$15 Co-Payment is Required to Schedule  
Limit of one pick-up per household per year**

**Sponsored by Greater Lebanon Refuse Authority**

### **Electronics Recycling (E-Waste):**

Greater Lebanon Refuse Authority (GLRA) accepts various electronics for **FREE** at it's Electronics Recycling Facility.

GLRA hours are Monday—Friday 8:00 a.m. to 3:30 p.m. and Saturdays from 8:30 a.m. to 11:30 a.m.

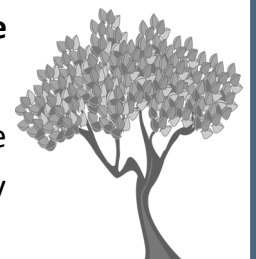
**You can recycle up to 5 electronic items per day!** This rule applies to everyone: residents, businesses, manufacturers and institutions.

**Check [www.goglra.org](http://www.goglra.org) for up-to-date acceptable items.**



Trees along the road should be trimmed to **three (3) feet** from the paved edge of the road and to a clearance height of **fourteen (14) feet.**

It is the responsibility of the property owner to trim the trees or obtain a tree trimming service in order to remain in compliance and ensure visibility and safety of those around. **The Township does not provide routine tree trimming services.**





## LEAF COLLECTION:

**WHEN:** From October 2nd — November 30th (weather permitting).

**WHAT:** LEAVES ONLY! NO BAGS!! No other yard waste will be picked up during this period. Pile leaves only at the curb and the leaf vacuum will be around to pick up the piles several times throughout the leaf collection.

Residents can purchase a Yard Waste and Recycling Center permit for \$40/year.

**FOG** refers to **Fats, Oils, and Grease** from food preparation and kitchen clean up. Significant sources of FOG include: Meat Fats; Cooking Fats; Food Scraps; Sauces; salad dressings and mayonnaise; and dairy products—Lard & butter.



- ✓ **DO:** Pour cooking oil into covered containers and dispose with garbage
- ✓ **DO:** Scrape food scraps into the garbage or compost bin
- ✓ **DO:** Wipe dishes free of FOG
- ✓ **DO:** Clean grease spills with absorbent material then dispose of it in the garbage



- X **DON'T:** Discharge FOG down drains, sinks, or storm grates
- X **DON'T:** Scrape food scraps into the sink
- X **DON'T:** Run water over greasy dishes

Sunday	Monday	Tuesday	Wednesday	Thursday	Friday	Saturday	
1	2 <b>FALL LEAF COLLECTION BEGINS</b>	3	4	5	6	7	
					Dates in blue indicate the Township building is closed.		
8	9	10 7 pm Supervisors Meeting	11	12 CLOSED County Convention	13	14 ●	
15	16	17	18	19	20	21	
22	23 7 pm Planning Commission	24 7 pm Supervisors Meeting	25	Follow the website for Trick or Treat information.			28 ○
29	30	31	Nov 1	Nov 2	Nov 3	● NEW ○ FULL	
<h1>October 2023</h1>							

## South Hills Park Closes for Season

**November 12, 2023**

*earlier if there's a significant snowfall*

- ⇒ **No winter maintenance in park after it's closed.**
- ⇒ **Bathrooms are closed when the park's closed.**

Call the Township Office **after January 2nd** to reserve a pavilion for your event in 2024. **(717) 274-0481**

See our **website** for fees, a map, photos, directions and Rules and Regulations:

[www.twp.south-lebanon.pa.us](http://www.twp.south-lebanon.pa.us)

## Upcoming Election:

**Primary Election: November 7<sup>th</sup>**

*Polls are open from 7 a.m. to 8 p.m.*

Designated polling locations in South Lebanon Twp. as per the Voter Registration Office:

### North District—

Masonic Hall  
499 S 14th Avenue

### Western District—

Friendship Fire Company  
610 S 2nd Street

### South District—

Zion United Methodist Church of Iona  
1920 S 5th Avenue




## DAYLIGHT SAVINGS

Turn your clocks **BACK** one hour in the evening **November 4**. Change your smoke detector batteries, too!

### Questions about Voting in Lebanon County:

Call Voter's Registration Office at **(717) 228-4428** or go to [www.pavoterservices.pa.gov](http://www.pavoterservices.pa.gov) to look up your polling location according to your address.

Sunday	Monday	Tuesday	Wednesday	Thursday	Friday	Saturday
Oct 29	Oct 30	Oct 31	1	2	3	4
<b>November 2023</b>				Dates in blue indicate the Township building is closed.		
5 Daylight Savings Time --Fall Back 	6	7 <b>CLOSED</b> Election Day	8	9	10 <b>CLOSED</b> Veteran's Day (Observed)	11 Veteran's Day
12 <b>SOUTH HILLS PARK CLOSED FOR SEASON</b>	13	14 7 pm Supervisors Meeting	15 America Recycles Day 	16	17	18
19	20	21	22	23 <b>CLOSED</b> Thanksgiving Day	24	25
26	27 7 pm Planning Commission	28 7 pm Supervisors Meeting	29	30	Dec 1	● NEW ○ FULL

## RULES AND REGULATIONS FOR RESIDENTS

- **Township Ordinance prohibits making disturbing noises between 11 pm — 7 am.**
- **Vehicles without a valid registration and inspection shall not be parked or stored on any street or property except for a completely enclosed building or approved junk yard.**
- **Building permits can be obtained by Lebanon County Planning at 717-228-4444 and are required to reconstruct, alter, convert, remove, add to, or change the use of existing buildings and land, or to construct a new building, structure, shed, fence, tree line or sign.**
- **Curfew for minors under the age of 18 is 11:00 p.m. to 5:00 a.m. Some exceptions apply.**
- **Major recreational equipment (travel trailers, RVs, boats, etc.) shall not be stored on any lot in a residential district except if in a carport, enclosed building, rear yard or portion of a driveway not within the road right-of-way.**

## ***Resource Hotline Call 2-1-1***

The 2-1-1 health & human services resource hotline provides **non-emergency information** and assistance to residents of Lebanon County, helping to reserve the 9-1-1 system for emergencies.

- **Call 2-1-1 anytime to receive free, 24/7, non-emergency health and human service information in Lebanon County from a live call specialist.**
- Text your zip code to 898211 to get help.



## **Sewer Bills**

South Lebanon Township sewer bills are due in: **March, June, September and December**. **PINK bills due the 5<sup>th</sup>, GREEN bills due the 15<sup>th</sup>, and BLUE bills due the 25<sup>th</sup>**. If a due date falls on a holiday or weekend, then the due date will be the next available business day.

Payments can be made via **cash, check or money order** in the office; placed in the Township drop box; or mailed to **1800 South 5th Avenue, Lebanon, PA 17042**. If you choose to mail your payment, allow plenty of time for the mail to arrive at the Township. **Payments must be received by 4:00 pm on the due date to be considered "on time"**.

You can also make online payments by going to **[www.twp.south-lebanon.pa.us](http://www.twp.south-lebanon.pa.us)** and following the "Pay Sewer Bill Online" link. **A fee will be charged for all online payments.**

**Reminder**—If you're connected to public water you will also receive a **separate quarterly bill** from the **[City of Lebanon Authority](#)** for your **water consumption**. **This is different from your sewer bill.**



## **WIPES CLOG PIPES! Disposable *doesn't* mean flushable.**

Place disposable wipes (baby wipes, etc.); Sanitary products (tampons, pads, etc.); Diapers, Paper towels, Cigarettes, etc. in the **TRASH** and **NOT** the toilet. **Only Human Waste and Toilet Paper should be flushed!**

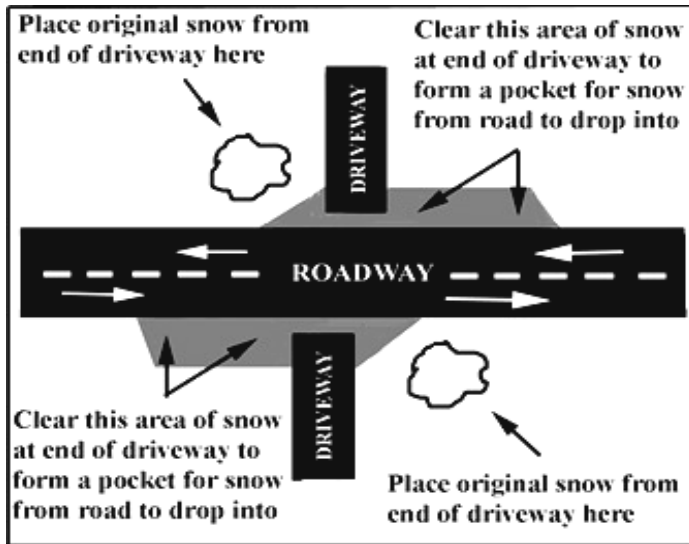
## PREPARE FOR WINTER

- Make sure your heat source is ready.
- Prepare snow shovels or blower.
- **Snow must be removed from sidewalks within 24 hours once precipitation has ceased.**



## SNOW PLOWING

- Mailboxes and support posts should be checked for stability to handle any plowing conditions.
- **Shake your mailbox!** If you shake it by the post and it “gives”, then it’s likely it could come lose with heavy snow this winter.
- **Residents are responsible for repairing any damage to mailboxes caused by the force of the snow (and not actually hit by the plow).**
- To prevent damage to lawns, property owner’s are recommended to **mark their property with posts or reflective markers.**



Sunday	Monday	Tuesday	Wednesday	Thursday	Friday	Saturday
<input checked="" type="radio"/> NEW <input type="radio"/> FULL <div style="border: 2px solid blue; padding: 5px; display: inline-block; font-size: 2em;">December 2023</div>	Nov 27	Nov 28	Nov 29	Nov 30	1	2
3	4	5 <span style="border: 1px solid black; padding: 2px;">DUE</span> PINK Sewer Bill DUE	6	7	8	9
10	11	12 <input checked="" type="radio"/> 7 pm Supervisors Meeting	13	14	15 <span style="border: 1px solid black; padding: 2px;">DUE</span> GREEN Sewer Bill DUE	16
17	18 7 pm Planning Commission	19	20	21	22	23
24 / 31 Christmas Eve / New Year's Eve	25 CLOSED Christmas Day	26 <span style="border: 1px solid black; padding: 2px;">DUE</span> <input type="radio"/> 7 pm Supervisors Meeting	27 BLUE Sewer ← Bill DUE	28	29	30

Dates in blue indicate the Township building is closed.

## Yard Waste & Recycling Center

**3 Linden Road Lebanon, PA 17042**

Residents can obtain a permit at the Township Building located at 1800 S. 5th Avenue. Office hours are Monday-Friday 7:30 am—4:00 pm.

Cost is **\$40 /year**; valid for calendar year (Jan 1—Dec 31) (no prorates). Payments can be made via cash, check, or money order (payable to South Lebanon Township).

The center allows residents to recycle their yard waste (including brush, leaves and garden residue) all year round. **The Yard Waste Center is open daily: April to September 7 am—7 pm and October to March 7 am—5 pm.**



## **Christmas Tree Recycling (FREE)**

**REMOVE ALL DECORATIONS FROM TREE!**

**DO NOT PUT TREE IN A BAG!**

**WHEN:**

- **Starts December 26 and ends three (3 weeks later)**

**DROP-OFF LOCATIONS:**

- **Behind Township Building**—1800 S. 5th Ave
- **By Maintenance Shed**—1113 State Drive
- **Ironwood Playground**—S. 14th Ave.
- **Yard Waste Center** (*permit holders only*) - 3 Linden Rd
- **GLRA**—1610 Russell Rd until the 3rd Saturday in February.

Sunday	Monday	Tuesday	Wednesday	Thursday	Friday	Saturday
Dec 31	<b>1 CLOSED</b> New Year's Day	2 7 pm Supervisors Meeting	3	4	5	6
7	8	9	10	11 ●	12	13
14	15 Martin Luther King Jr. Day	16	17	18	19	20
21	22 7 pm Planning Commission	23 7 pm Supervisors Meeting	24	25 ○	26	27
28	29	30	31	Feb 1	Feb 2	● NEW ○ FULL
<b>January 2024</b>						

Dates in blue indicate the Township building is closed.